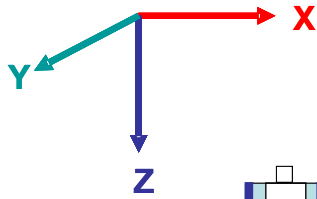
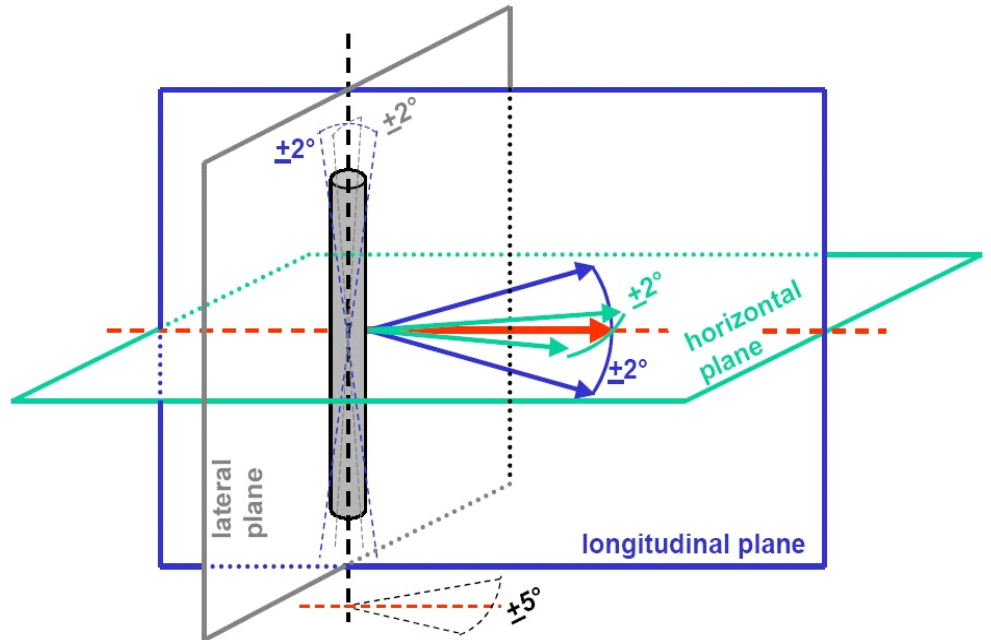
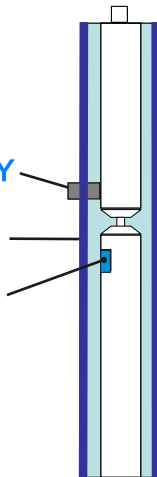




ISO/TS 13499 - RED C : 2011(E)
Impactors
Pedestrian legform impactor



D 0 FEMR 00 00 PL AN Y
D 0 TIBI UP 00 PL AN Y
D 0 TIBI 00 00 PL AC X



D 0 TIBI 00 00 PL AC X ?	Tibia acceleration	transducer
D 0 TIBI UP 00 PL AN Y ?	Bending angle tibia	transducer
D 0 FEMR 00 00 PL AN Y ?	Bending angle femur	transducer
D 0 KNEE 00 00 PL AN Y X	Bending angle effective	calculation
D 0 FEMR 00 00 PL DS X X	Shear displacement	calculation
D 0 FEMR 00 OR PL DS X V	Position X	filmanalysis
D 0 FEMR 00 OR PL DS Y V	Position Y	filmanalysis
D 0 FEMR 00 OR PL DS Z V	Position Z	filmanalysis
D 0 FEMR 00 OR PL AN X V	Orientation in lateral plane YZ	filmanalysis
D 0 FEMR 00 OR PL AN Y V	Orientation in longitudinal plane XZ	filmanalysis
D 0 FEMR 00 OR PL AN Z V	Orientation in horizontal plane XY	filmanalysis
D 0 TIBI UP 00 PL DS X X	Indentation at hit point	calculation
D 0 FEMR 00 00 PL VE X ?	Impact velocity - direct measurement	transducer
D 0 FEMR 00 00 PL VD X X	Impact velocity - differ. from displ.	calculation
D 0 FEMR 00 00 PL VA X X	Impact velocity - integr. from accel.	calculation