

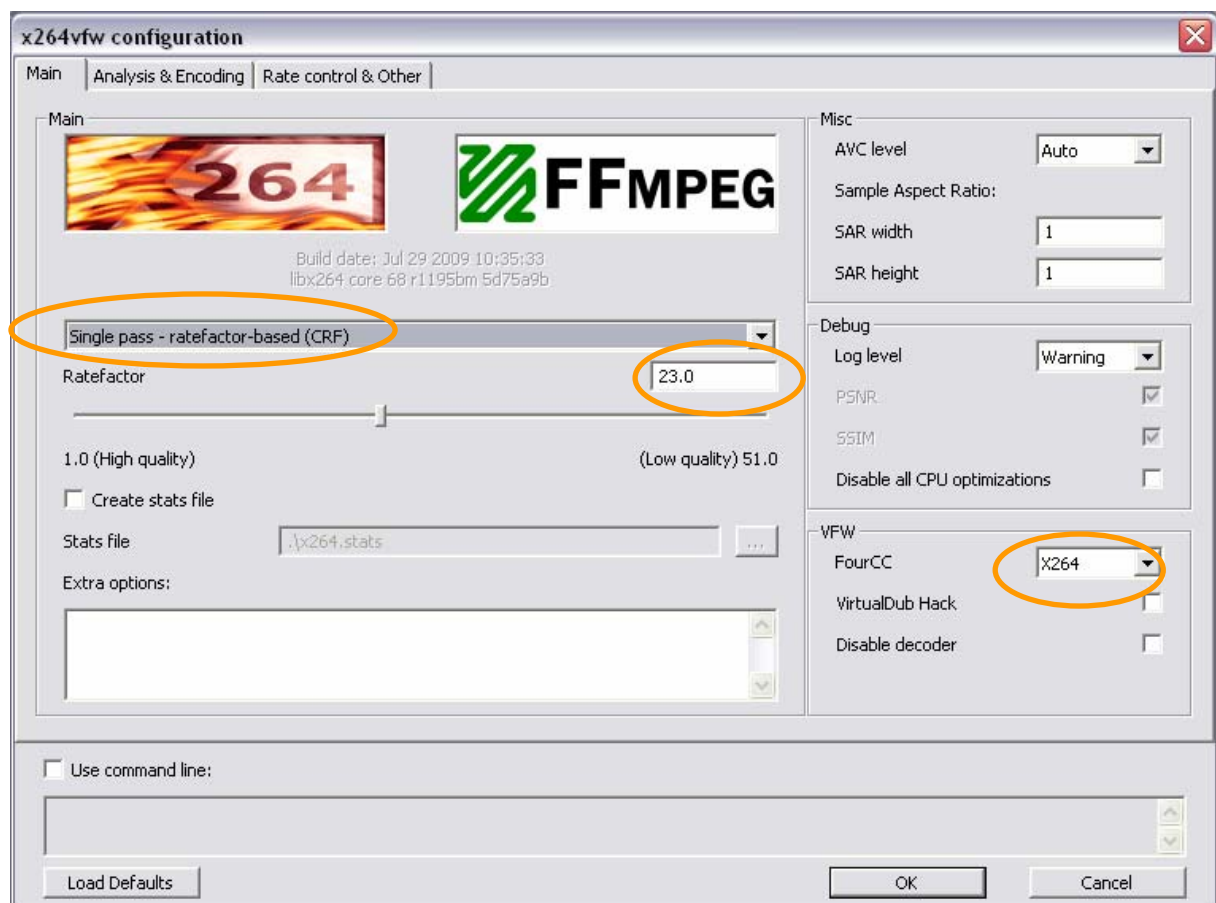
## X264 – Encoder - Parameter for FFMPEG

Recommended version of X264 codec is 1159.

Values marked in red color may deviate from defaults!

### Single pass – ratefactor-based (CRF)

Ratefactor	23 or less
FourCC	X264
ME algorithm	umh
Subpixel ME refinement	7 RD on all
Min. GOP Size	7
Max. GOP Size	7
Max. Number of consecutive B-Frames	0



**x264vfw configuration**

Main Analysis & Encoding Rate control & Other

Analysis

☒ Adaptive DCT

I-frames partitions

☒ i8x8 ☒ i4x4

P/B-frames partitions

☒ i8x8 ☒ i4x4

☒ p8x8 ☐ p4x4 ☒ b8x8

Fast P-skip ☒

Max frame refs

Mixed refs ☒

ME algorithm

ME range

Subpixel ME refinement

Chroma ME ☒

Psy RDO strength

Min GOP size

Max GOP size

Scenecut threshold

Max consecutive B-frames

Adaptive B-frames

B-frames bias

B-frames MV prediction

B-frames pyramid ☐

Weighted B-frames prediction ☒

Encoding

☒ In-loop deblocking filter

Deblocking strength

Deblocking threshold

Interlaced

CABAC ☒

DCT decimate ☒

Noise reduction

Trellis

Intra deadzone

Inter deadzone

Quant matrices

Custom quant matrices file:

Psy trellis strength

☐ Use command line:

Load Defaults OK Cancel

**x264vfw configuration**

Main Analysis & Encoding Rate control & Other

Rate control

VBV max bitrate (kbit/s)

VBV buffer size (kbit)

VBV initial occupancy (%)

Min QP

Max QP

Max QP step

QP factor between I & P

QP factor between P & B

Chroma QP offset

QP curve compression

Temp. blur of complexity

Temp. blur of quant

Bitrate tolerance (%)

AQ

Mode

Strength

Multithreading

Threads

Deterministic ☒

Threads queue

VUI

Crop overscan

Video format

Full range

Color primaries

Transfer characteristics

Color matrix

Chroma sample location

☐ Use command line:

Load Defaults OK Cancel